



The women's oversized crew neck sweatshirt

Oversized

XS XXL

300 GSM

Details

- Raglan sleeve
- 1x1 rib at neck collar and sleeve hem
- Self fabric at bottom hem
- Inside herringbone back neck tape
- Slit at side seams with single herringbone facing
- Self fabric half moon at back neck
- Single needle topstitch on all seams
- Back length is longer than front length

Composition

Shell - French Terry
 85% Cotton - Organic Ring Spun Combed , 15% Polyester - Recycled - 300 GSM
 Fabric washed , Light sueded

Care

Wash similar colours together, no ironing on print,
 wash and iron inside out.



Country of origin

Weaving : Bangladesh
 Dyeing : Bangladesh
 Assembly : Bangladesh



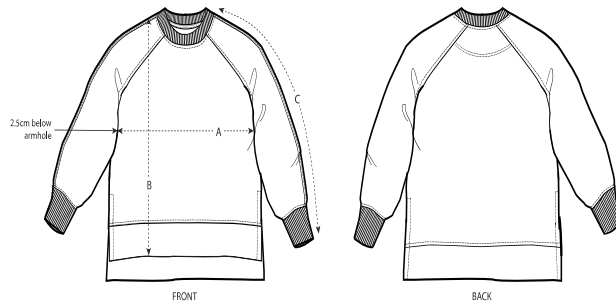
Colors



Essential Heathers



Size Guide



Sizes	XS	S	M	L	XL	XXL
A Half Chest	62.5	65	68	71	74	77
B Body Length	63	65	67	69	70	71
C Sleeve Length	68.5	70.5	72	73.5	74.5	75.8

Packing

Sizes	XS	S	M	L	XL	XXL
Pieces/bag	5	5	5	5	5	5
Pieces/box	20	20	20	20	20	20