



The women's raglan sweatshirt

Medium Fit

XS XXL

300 GSM

Details

- Raglan sleeves
- 2X1 Ribs at collar, sleeves cuffs and bottom hem
- 3 needles flatlock stitches at neck, sleeves, side seams and halfmoon
- 2 Needles stitches at bottom hem and sleeves cuffs
- Inside gros grain back neck tape
- Self fabric half moon at back neck

Composition

Shell - French Terry
 100% Cotton - Organic Ring Spun Combed - 300 GSM
 Fabric washed

Care

Wash similar colours together, no ironing on print,
 wash and iron inside out.



Country of origin

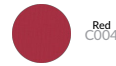
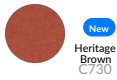
Weaving : Bangladesh
 Dyeing : Bangladesh
 Assembly : Bangladesh



Whites



Colors



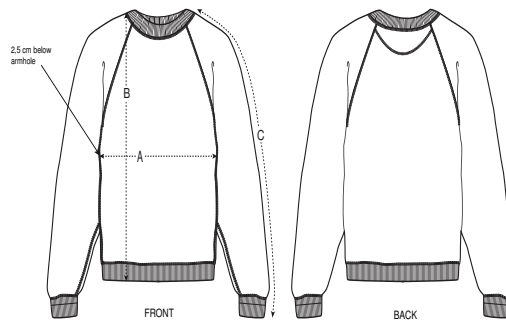
Essential Heathers



Special Heathers



Size Guide



Sizes		XS	S	M	L	XL	XXL
A	Half Chest	49	52	55	58	61	65
B	Body Length	58	61	63	65	67	69
C	Sleeve Length	67.8	69	70.5	71.8	73	74.3

Packing

Sizes		XS	S	M	L	XL	XXL
	Pieces/bag	5	5	5	5	5	5
	Pieces/box	20	20	20	20	20	20