

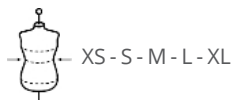
NS920
Ladies' merino wool jumper



50% organic cotton and 50% RWS* responsible Merino wool 5 gauge
Regular fit and "balloon" sleeves 1x1 rib neckline, cuffs and bottom
hem "Fully Fashion" knit *Responsible Wool Standard

620 g/m² ♀

Sizes



More information

Logistic



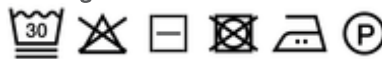
Country of origin



Customs code



Washing instructions



Colours

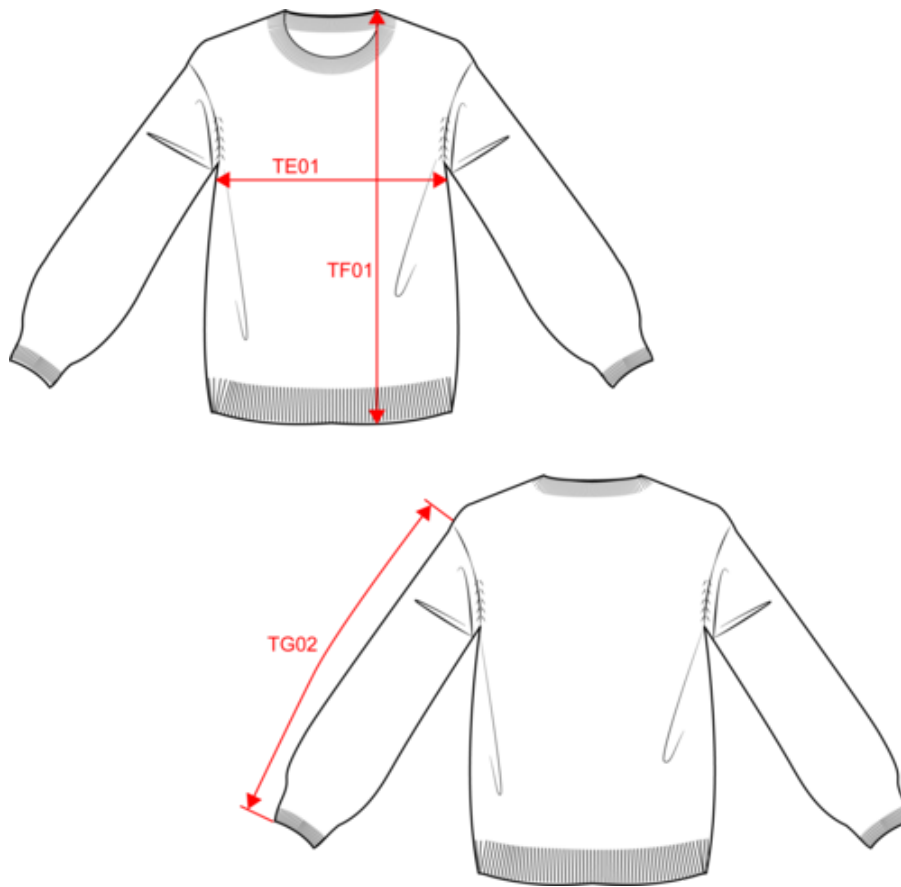


Certifications



NS920
Ladies' merino wool jumper

Dimensions (cm)



Measurements in cm	XS	S	M	L	XL
TE01 - 1/2 chest width at 1.5cm below armhole	50.00	53.00	56.00	59.00	62.00
TF01 - Total height from HSP	56.00	58.00	60.00	62.00	64.00
TG02 - Long sleeve length	45.00	46.00	47.00	48.00	49.00

NS920
Ladies' merino wool jumper

Colours information



Ivory
RVB : 236,231,218
Pantone C : 7534C
Pantone TCX : 11-0701TCX



Navy Blue
RVB : 41,45,57
Pantone C : 433C
Pantone TCX : 19-4010TCX

Logistic



5



10

Sizes	Width (cm)	Height (cm)	Length (cm)	Net weight (kg)	Gross weight (kg)	Pieces/Box	Pieces/Bundle
XS	40.00	40.00	60.00	5.40000	7.40000	10	5
S	40.00	40.00	60.00	5.90000	7.90000	10	5
M	40.00	40.00	60.00	6.43000	8.43000	10	5
L	40.00	40.00	60.00	6.97000	8.97000	10	5
XL	40.00	40.00	60.00	7.54000	9.54000	10	5