

NS607
Ladies' eco-friendly jacket with hemp



90% organic cotton and 10% hemp Cotton twill Regular fit Recycled metal buttons Natural (undyed) fabric with an authentic appearance Enzyme-washed product Two chest pockets with flap and button Button placket Button placket on the rear hem Two piped pockets at the front sides Front and back panels Sleeves with slit and buttoned cuffs

370 g/m²

Sizes

XS-S-M-L-XL

More information

Logistic

1 10

Country of origin

BD - Bangladesh

Customs code

62023010

Washing instructions

Colours

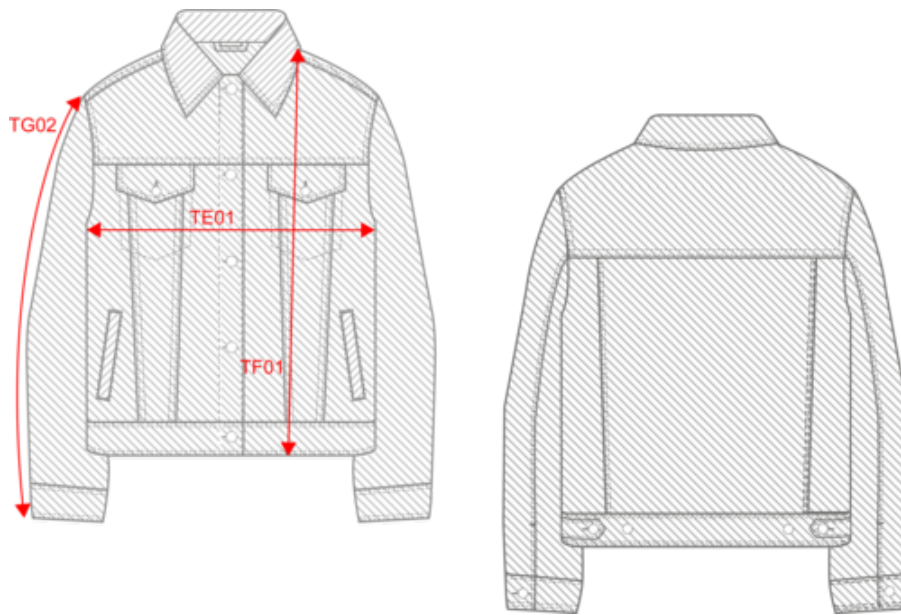
Raw Natural

Certifications



NS607
Ladies' eco-friendly jacket with hemp

Dimensions (cm)



Measurements in cm	XS	S	M	L	XL
TE01 - 1/2 chest width at 1.5cm below armhole	45.50	48.50	51.50	54.50	57.50
TF01 - Total height from HSP	58.50	60.50	62.50	64.50	66.50
TG02 - Long sleeve length	61.00	62.00	63.00	64.00	65.00

NS607
Ladies' eco-friendly jacket with hemp

Colours information

Raw Natural
RVB : 215,201,179
Pantone C : Based on 7500C
Pantone TCX : Based on 13-1006TCX

Logistic



1



10

Sizes	Width (cm)	Height (cm)	Length (cm)	Net weight (kg)	Gross weight (kg)	Pieces/Box	Pieces/Bundle
XS	40.00	17.00	60.00	6.00000	6.60000	10	1
S	40.00	17.00	60.00	6.40000	7.00000	10	1
M	40.00	17.00	60.00	6.80000	7.40000	10	1
L	40.00	19.00	60.00	7.20000	7.80000	10	1
XL	40.00	19.00	60.00	7.60000	8.20000	10	1