



85% organic cotton and 15% post-consumer polyester Ringspun combed cotton Straight fit Brushed 3-ply fleece, LSF (Low Shrinkage Fleece) Enzyme-washed 1/2 circle in the back 1x1 rib bottom hem and cuffs Double overstitching on cuffs, armholes and bottom hem Single overstitching on neckline Inner taped neckline with herringbone Hood lined with main material in very streamlined design with no overstitching around the edge

350 g/m² ♀♂

Sizes

4/6 ans - 6/8 ans - 8/10 ans - 10/12 ans - 12/14 ans

More information

Logistic

5 20

Country of origin

BD - Bangladesh

Customs code

61102099

Washing instructions



Colours

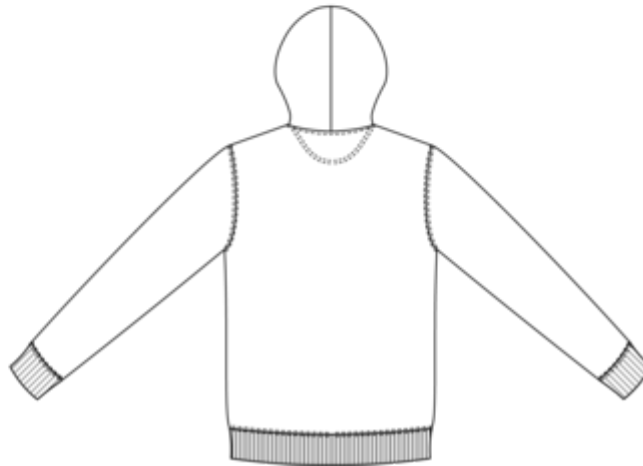
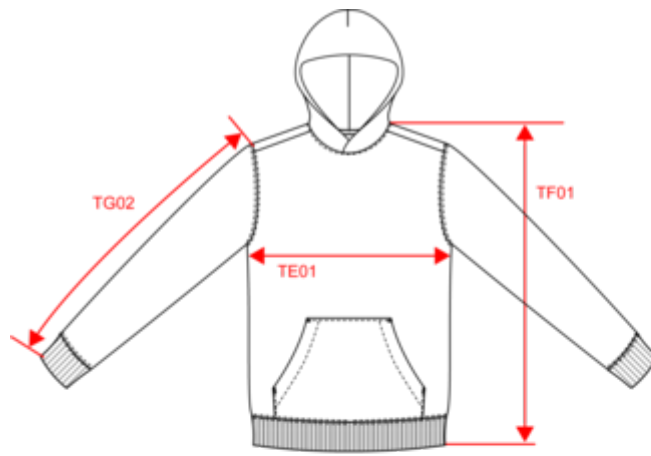


Certifications



NS404
Kids' hooded sweatshirt - 350gsm

Dimensions (cm)



Measurements in cm	4/6	6/8	8/10	10/12	12/14
TE01 - 1/2 chest width at 1.5cm below armhole	36.70	38.40	41.00	44.50	48.00
TF01 - Total height from HSP	45.90	50.70	55.50	60.30	65.10
TG02 - Long sleeve length	40.65	44.85	49.25	53.85	58.45

NS404

Kids' hooded sweatshirt - 350gsm

Colours information



Aquamarine
 RVB : 153,173,190
 Pantone C : 7542C
 Pantone TCX : 15-4008TCX



Black
 RVB : 35,35,37
 Pantone C : Black
 Pantone TCX : 19-4004TCX



Hibiscus Red
 RVB : 134,27,47
 Pantone C : 1815C
 Pantone TCX : 19-1656TCX



Jade Green
 RVB : 143,167,162
 Pantone C : 5575C
 Pantone TCX : 16-5106TCX



Mineral Grey
 RVB : 94,104,116
 Pantone C : 431C
 Pantone TCX : 18-4215TCX



Navy Blue
 RVB : 41,45,57
 Pantone C : 433C
 Pantone TCX : 19-4010TCX

Logistic



5



20

Sizes	Width (cm)	Height (cm)	Length (cm)	Net weight (kg)	Gross weight (kg)	Pieces/Box	Pieces/Bundle
4/6 ans	40.00	21.00	60.00	7.00000	5.50000	20	5
6/8 ans	40.00	21.00	60.00	7.60000	6.10000	20	5
8/10 ans	40.00	23.00	60.00	8.30000	7.20000	20	5
10/12 ans	40.00	26.00	60.00	9.00000	7.50000	20	5
12/14 ans	40.00	26.00	60.00	9.60000	8.20000	20	5