

NS328
Ladies' Terry Towel t-shirt



MADE IN PORTUGAL 80% organic cotton- 20% recycled polyester
Towelling material Oversize fit Side stitching Enzyme washed Garment
dyed after assembly: colours may vary slightly. 1x1 ribbed neckline
Inner taped neck in main material Half-moon on back Side slits with
inner herringbone finish Twin needle finish at cuffs and hem

210 g/m²

Sizes

XS - S - M - L - XL

More information

Logistic

5 30

Country of origin

PT - Portugal

Customs code

61091000

Washing instructions

Colours

Apricot Candy Rose Ivory Malachite Green Parma Riviera Blue

Certifications

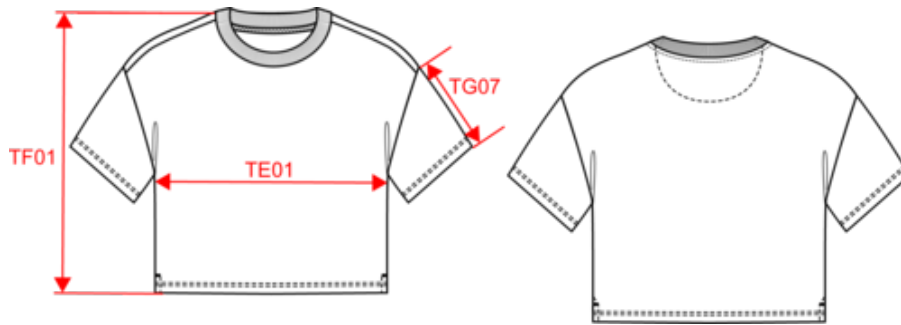
Made with 80% Organic materials
Certified by Ecocert Greenlife.
EGL N°183963 / TOPTEX Belgique

Made with 80% Organic materials
Certified by Ecocert Greenlife.
EGL N°183960 / TOPTEX France

Made with 80% Organic materials
Certified by Ecocert Greenlife.
EGL N°185651 / NATIVE SPIRIT

NS328
Ladies' Terry Towel t-shirt

Dimensions (cm)



Measurements in cm	XS	S	M	L	XL
TE01 - 1/2 chest width at 1.5cm below armhole	53.00	56.00	59.00	62.00	65.00
TF01 - Total height from HSP	55.00	57.00	59.00	61.00	63.00
TG07 - Short sleeve length	17.00	17.75	18.50	19.25	20.00

NS328 Ladies' Terry Towel t-shirt

Colours information



Apricot
RVB : 254,166,127
Pantone C : 1565C
Pantone TCX : 15-1331TCX



Candy Rose
RVB : 237,122,158
Pantone C : 1775C
Pantone TCX : 16-2124TCX



Ivory
RVB : 236,231,218
Pantone C : 7534C
Pantone TCX : 11-0701TCX



Malachite Green
RVB : 0,111,83
Pantone C : 335C
Pantone TCX : 18-5338TCX



Parma
RVB : 184,182,210
Pantone C : 5295C
Pantone TCX : 14-3911TCX



Riviera Blue
RVB : 66,97,133
Pantone C : 7699C
Pantone TCX : 18-4027TCX

Logistic



5



30

Sizes	Width (cm)	Height (cm)	Length (cm)	Net weight (kg)	Gross weight (kg)	Pieces/Box	Pieces/Bundle
XS	40.00	22.00	60.00	0.00000	5.46000	30	5
S	40.00	22.00	60.00	0.00000	5.85000	30	5
M	40.00	22.00	60.00	0.00000	6.18000	30	5
L	40.00	22.00	60.00	0.00000	6.60000	30	5
XL	40.00	22.00	60.00	0.00000	7.02000	30	5