

PROACT.[®]

PA189

Adults' tracksuit bottoms

- Mesh panel at the back for better ventilation.
- Elasticated waistband with drawstring for a better fit.
- Modern slim fit.

100% polyester tricot. Mesh panel at the back for better ventilation. 2 zipped side pockets. Elasticated waistband with drawstring. Zip at hem. Modern slim fit.



XS S M L XL XXL 3XL



210 g/m²

Certifications



TEAR AWAY

More information

Logistic



1



25



BD - Bangladesh
PK - Pakistan

Customs code



61046300



Black

Dark
Grey

Sporty
Navy

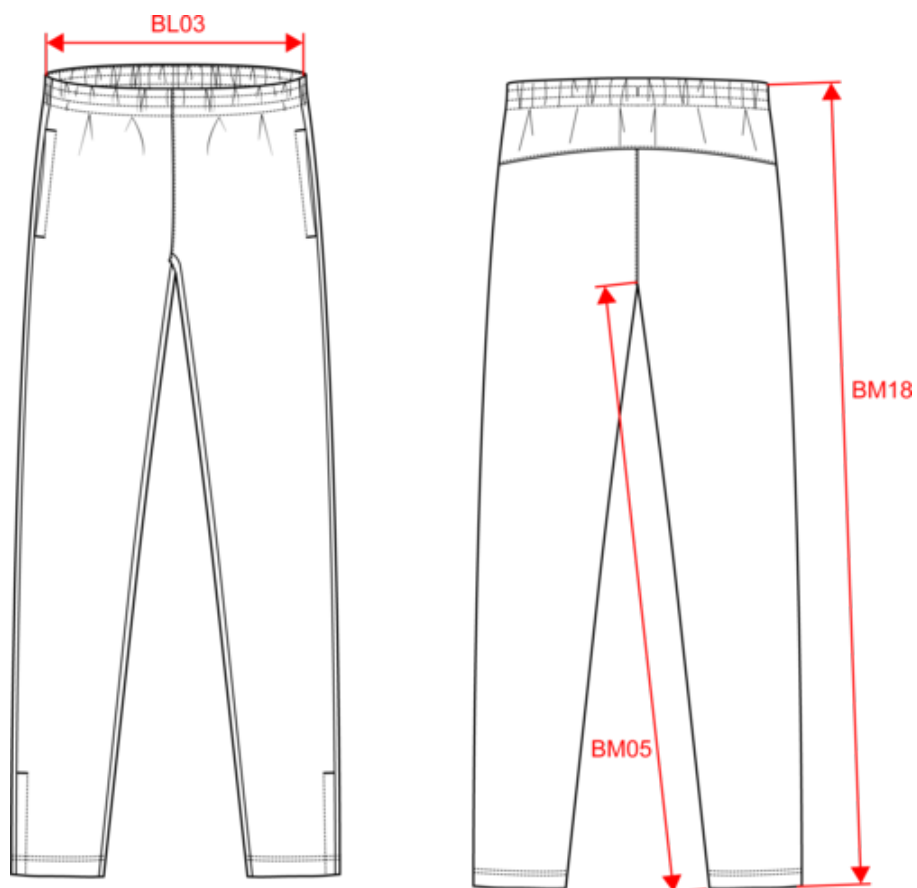


Also available in version



PA199

Dimensions (cm)



Measurements in cm	XS	S	M	L	XL	XXL	3XL
BL03 - 1/2 elasticated waist width relaxed (front over back)	33.00	35.00	37.00	39.00	42.00	45.00	48.00
BM05 - Inseam length	80.40	81.00	81.50	82.00	82.60	83.00	83.75
BM18 - Side length (waistband included)	104.80	106.00	107.30	108.50	110.00	111.20	112.50

PROACT[®]

PA189

Adults' tracksuit bottoms

Colours information



Black
RVB : 35,35,37
Pantone C : Black
Pantone TCX : 19-4004TCX



Dark Grey
RVB : 63,60,60
Pantone C : 447C
Pantone TCX : 19-0000TCX



Sporty Navy
RVB : 41,52,47
Pantone C : 533C
Pantone TCX : 19-4024TCX

Logistic



1



25

Sizes	Width (cm)	Height (cm)	Length (cm)	Net weight (kg)	Gross weight (kg)	Pieces/Box	Pieces/Bundle
XS	40.00	22.00	60.00	8.90000	10.80000	25	1
S	40.00	22.00	60.00	9.00000	11.00000	25	1
M	40.00	22.00	60.00	9.20000	11.20000	25	1
L	40.00	22.00	60.00	9.50000	11.50000	25	1
XL	40.00	25.00	60.00	9.80000	11.80000	25	1
XXL	40.00	25.00	60.00	10.10000	12.10000	25	1
3XL	40.00	27.00	60.00	10.40000	12.40000	25	1