

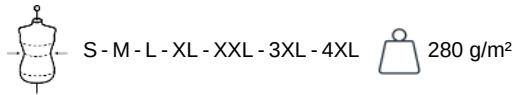
KARIBAN

K7025

Men's eco-friendly fleece pants

- Made from 3-yarn LSF (Low Shrinkage Fleece): hard-wearing and resistant in the wash
- No label: 100 % customisable for your brand.
- Fashion, comfort, and eco-responsibility.

85% cotton / 15% polyester. Made from 85% organic cotton and 15% post-consumer recycled polyester. LSF (Low Shrinkage Fleece) 3-thread brushed fleece. Combed Cotton. Enzyme-washed. Straight fit. 2 side pockets. Elasticated waistband with flat drawcord. Elasticated leg bottoms. No brand label, size tab only for ease of rebranding. Certified STANDARD 100 by OEKO-TEX® N° CQ1007/7, IFTH.

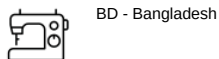


More information

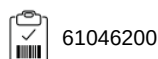
Logistic



Country of origin



Customs code



Washing instructions



Also available in version



K7027

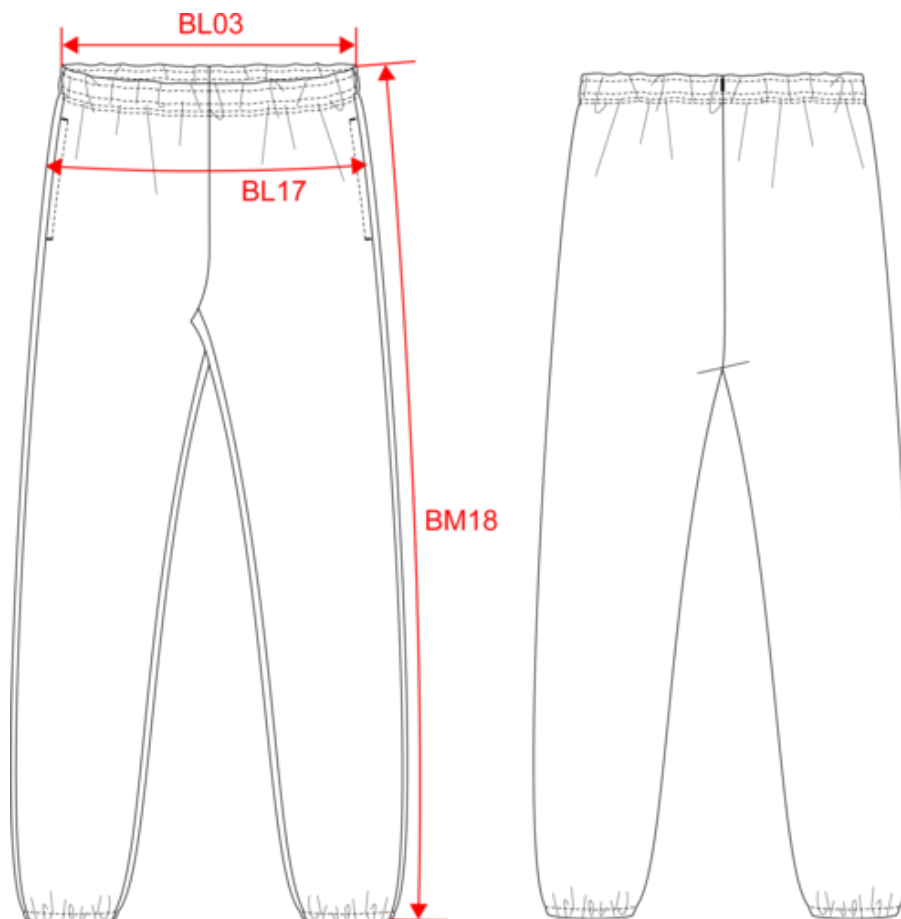


KARIBAN

K7025

Men's eco-friendly fleece pants

Dimensions (cm)



Measurements in cm	S	M	L	XL	XXL	3XL	4XL
BL03 - 1/2 elasticated waist width relaxed (front over back)	36.00	38.00	40.00	43.00	46.00	49.00	52.00
BL17 - 1/2 hip width (measured parallel to waistband)	48.00	51.00	54.00	57.00	60.00	63.00	66.00
BM18 - Side length (waistband included)	108.00	108.75	109.50	110.25	111.00	111.75	112.50

KARIBAN

K7025

Men's eco-friendly fleece pants

Colours information



Black

RVB : 35,35,37
Pantone C : Black
Pantone TCX : 19-4004TCX



Clay

RVB : 188,180,174
Pantone C : 7535C
Pantone TCX : 15-4502TCX



Grey Heather

RVB :
Pantone C : Based on 417C
Pantone TCX : Based on 18-5203TCX



Navy

RVB : 41,46,56
Pantone C : 433C
Pantone TCX : 19-4012TCX

Logistic



1



20

Sizes	Width (cm)	Height (cm)	Length (cm)	Net weight (kg)	Gross weight (kg)	Pieces/Box	Pieces/Bundle
S	40.00	38.00	60.00	8.80000	10.00000	20	1
M	40.00	38.00	60.00	9.00000	10.10000	20	1
L	40.00	40.00	60.00	9.30000	10.60000	20	1
XL	40.00	40.00	60.00	9.80000	11.10000	20	1
XXL	40.00	40.00	60.00	10.40000	11.70000	20	1
3XL	40.00	40.00	60.00	10.70000	12.00000	20	1
4XL	40.00	40.00	60.00	11.10000	12.60000	20	1