

# KARIBAN

K6125

## Ladies' quilted bodywarmer

- Corduroy trim at neck for added comfort
- Chic, urban look for a casual style.
- Soft, comfortable material.

Outer: 100% polyester pongee. Inner: 100 % polyester taffeta. Zip fastening concealed beneath press stud placket. 2 double front pockets with press stud flaps. 1 inner pocket. Press stud shoulder yoke. Corduroy trim on hem, inside neck and reverse side of pocket flap. 2 slits with press studs at back. Certified STANDARD 100 by OEKO-TEX® N° CQ 1007/8, IFTH. Average weight size M : 407g.



XS - S - M - L - XL - XXL



290 g/m<sup>2</sup>



### More information

#### Logistic



1



10



CN - China

#### Customs code



62014010

#### Washing instructions



Black

Mossy  
Green /  
Black

Navy /  
Black

### Also available in version



K6124

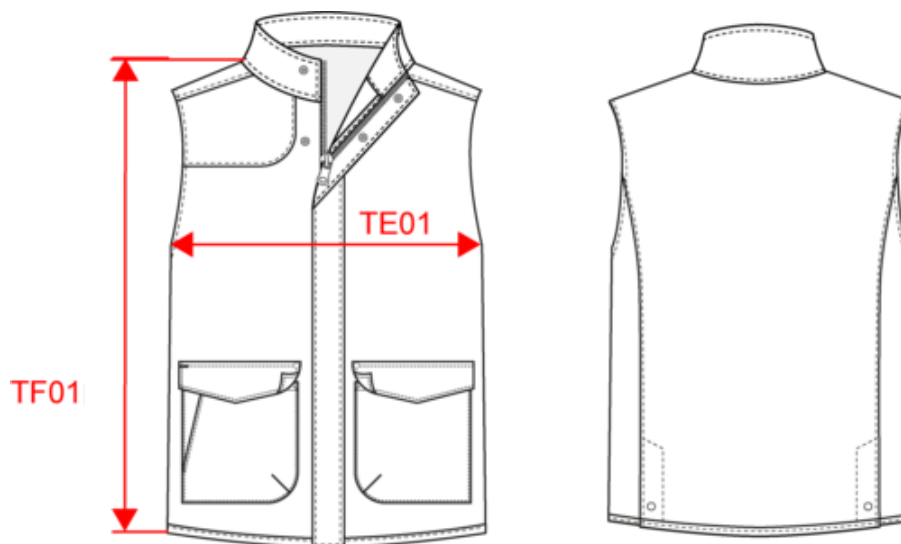


# KARIBAN

K6125

Ladies' quilted bodywarmer

Dimensions (cm)



Measurements in cm	XS	S	M	L	XL	XXL
TE01 - 1/2 chest width at 1.5cm below armhole	45.00	48.00	51.00	54.00	57.00	60.00
TF01 - Total height from HSP	62.00	64.00	66.00	68.00	70.00	72.00

# KARIBAN

K6125

## Ladies' quilted bodywarmer

### Colours information



**Black**  
RVB : 35,35,37  
Pantone C : Black  
Pantone TCX : 19-4004TCX



**Mossy Green**  
RVB : 74,69,57  
Pantone C : 7771C  
Pantone TCX : 19-0414

**Black**

RVB : 35,35,37  
Pantone C : Black  
Pantone TCX : 19-4004TCX



**Navy**  
RVB : 41,46,56  
Pantone C : 433C  
Pantone TCX : 19-4012TCX

**Black**

RVB : 35,35,37  
Pantone C : Black  
Pantone TCX : 19-4004TCX

Logistic



1



10

Sizes	Width (cm)	Height (cm)	Length (cm)	Net weight (kg)	Gross weight (kg)	Pieces/Box	Pieces/Bundle
XS	0.00	0.00	0.00	0.00000	0.00000	10	0
S	0.00	0.00	0.00	0.00000	0.00000	10	0
M	0.00	0.00	0.00	0.00000	0.00000	10	0
L	0.00	0.00	0.00	0.00000	0.00000	10	0
XL	0.00	0.00	0.00	0.00000	0.00000	10	0
XXL	0.00	0.00	0.00	0.00000	0.00000	10	0