

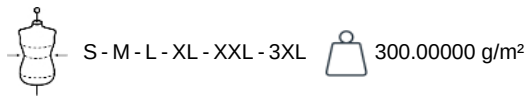
KARIBAN

K6122

Men's bomber jacket

- Casual city look, perfect for everyday.
- Comfortable thanks to the quilted lining.
- 1 zip at chest and 1 zip access at hem for decoration.

100% polyester. Padded lining in 100 % polyester. Zip fastening. 2 front pockets with piping. Zipped patch pocket with pen holder on left sleeve. Inner pocket with piping. 2x2 ribbed neck, cuffs and hem. 1 zip at chest and 1 zip access at hem for decoration. Average weight size L : 740g.



More information

Logistic



CN - China
BD - Bangladesh

Customs code



62024010

Washing instructions



Also available in version



K6123

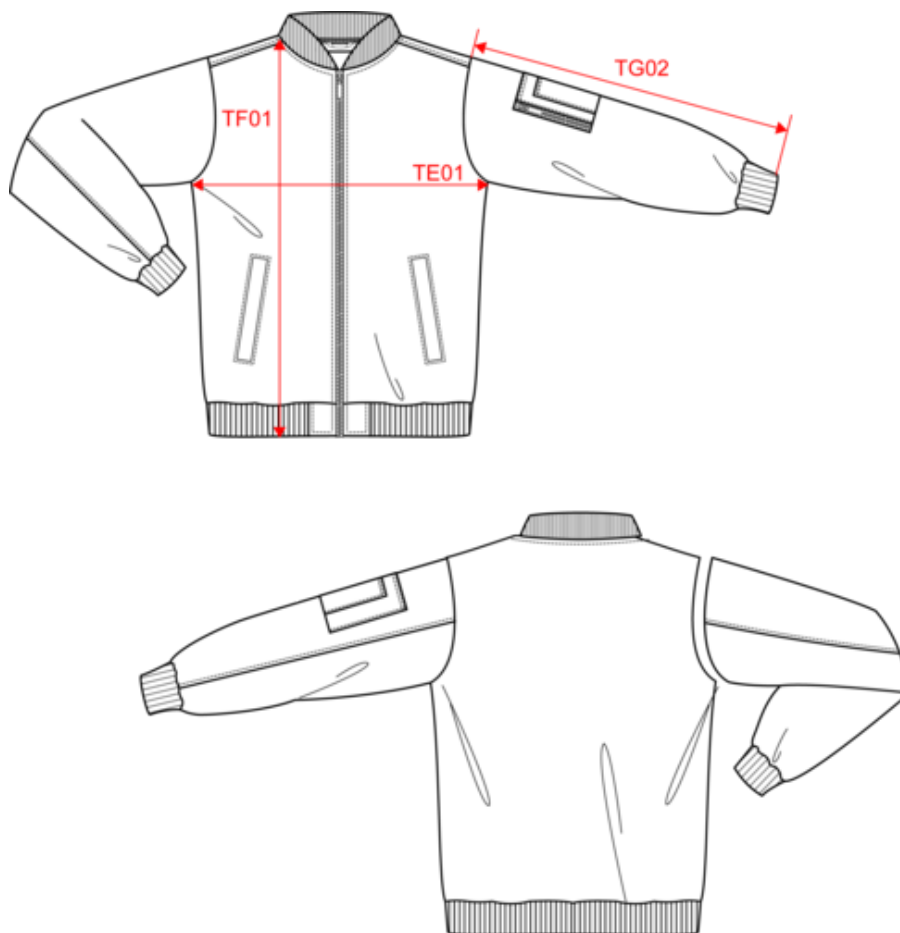


KARIBAN

K6122

Men's bomber jacket

Dimensions (cm)



| Measurements in cm | S | M | L | XL | XXL | 3XL |
|---|-------|-------|-------|------|------|------|
| TE01 - 1/2 chest width at 1.5cm below armhole | 58.00 | 61.00 | 64.00 | 3.00 | 6.00 | 9.00 |
| TF01 - Total height from HSP | 70.50 | 72.50 | 74.50 | 2.00 | 4.00 | 6.00 |
| TG02 - Long sleeve length | 69.00 | 70.50 | 72.00 | 1.50 | 3.00 | 4.50 |

KARIBAN

K6122

Men's bomber jacket

Colours information



Black

RVB : 35,35,37
Pantone C : Black
Pantone TCX : 19-4004TCX



Deep khaki

RVB : 64,59,49
Pantone C : Black 7C
Pantone TCX : 19-0608TCX



Navy

RVB : 41,46,56
Pantone C : 433C
Pantone TCX : 19-4012TCX

Logistic



1



10

| Sizes | Width (cm) | Height (cm) | Length (cm) | Net weight (kg) | Gross weight (kg) | Pieces/Box | Pieces/Bundle |
|-------|------------|-------------|-------------|-----------------|-------------------|------------|---------------|
| S | 40.00 | 35.00 | 60.00 | 6.00000 | 7.00000 | 10 | 1 |
| M | 40.00 | 35.00 | 60.00 | 6.30000 | 7.30000 | 10 | 1 |
| L | 40.00 | 35.00 | 60.00 | 6.50000 | 7.50000 | 10 | 1 |
| XL | 40.00 | 37.00 | 60.00 | 6.70000 | 7.70000 | 10 | 1 |
| XXL | 40.00 | 37.00 | 60.00 | 6.90000 | 7.90000 | 10 | 1 |
| 3XL | 40.00 | 37.00 | 60.00 | 7.10000 | 8.10000 | 10 | 1 |