

KARIBAN

K5003

Ladies' long-sleeved crepe blouse

- Crew neck with small gathers for an understated, elegant look.
- The corporate womenswear essential.
- Loose fit and lightweight fabric in keeping with the chic and minimalist trend.

100% polyester. Fluid and light crepe fabric. Round neckline with binding. Small gathers at front neckline. Rear and cuffs fastening with a covered button.



8 UK (34 FR) 10 UK (36 FR) 12 UK (38 FR) 14 UK (40 FR) 16 UK (42 FR) 1

More information

Logistic



1



50



Country of origin

BD - Bangladesh

Customs code



62064000

Washing instructions



Black

Deep
Sea
Blue

Off
White

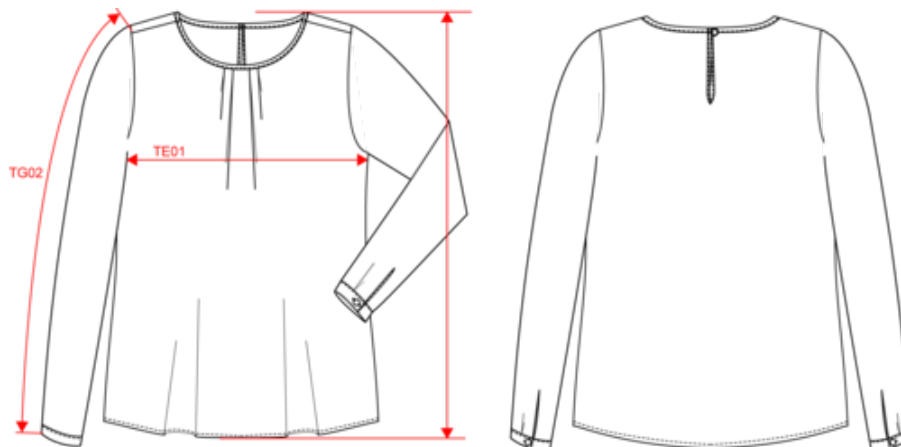


KARIBAN

K5003

Ladies' long-sleeved crepe blouse

Dimensions (cm)



Measurements in cm	34	36	38	40	42	44	46
TB02 - Shoulder length	8.50	9.00	9.50	10.00	10.50	11.00	11.50
TE01 - 1/2 chest width at 1.5cm below armhole	45.50	47.50	49.50	51.50	53.50	55.50	57.50
TF03 - Front total height from HSP	63.00	64.00	65.00	66.00	67.00	68.00	69.00

KARIBAN

K5003

Ladies' long-sleeved crepe blouse

Colours information



Black

RVB : 35,35,37
Pantone C : Black
Pantone TCX : 19-4004TCX



Deep Sea Blue

RVB : 43,47,69
Pantone C : 533C
Pantone TCX : 19-3920TCX



Off White

RVB : 239,239,234
Pantone C : 7527C
Pantone TCX : 11-0602TCX

Logistic



1



50

Sizes	Width (cm)	Height (cm)	Length (cm)	Net weight (kg)	Gross weight (kg)	Pieces/Box	Pieces/Bundle
34 FR	40.00	15.00	60.00	5.00000	6.70000	50	0
36 FR	40.00	15.00	60.00	5.20000	6.90000	50	0
38 FR	40.00	15.00	60.00	5.50000	7.20000	50	0
40 FR	40.00	15.00	60.00	5.70000	7.40000	50	0
42 FR	40.00	15.00	60.00	5.90000	7.60000	50	0
44 FR	40.00	15.00	60.00	6.10000	7.80000	50	0
46 FR	40.00	15.00	60.00	6.40000	8.10000	50	0

Taille fabricant	Pays-Bas	Italie	Portugal	Espagne	Royaume-Uni	Allemagne
32 FR	30 NL	36 IT	32 PT	32 ES	6 UK	30 DE
34 FR	32 NL	38 IT	34 PT	34 ES	8 UK	32 DE
36 FR	34 NL	40 IT	36 PT	36 ES	10 UK	34 DE
38 FR	36 NL	42 IT	38 PT	38 ES	12 UK	36 DE
40 FR	38 NL	44 IT	40 PT	40 ES	14 UK	38 DE
42 FR	40 NL	46 IT	42 PT	42 ES	16 UK	40 DE
44 FR	42 NL	48 IT	44 PT	44 ES	18 UK	42 DE
46 FR	44 NL	50 IT	46 PT	46 ES	20 UK	44 DE
48 FR	46 NL	52 IT	48 PT	48 ES	22 UK	46 DE
50 FR	48 NL	54 IT	50 PT	50 ES	24 UK	48 DE