

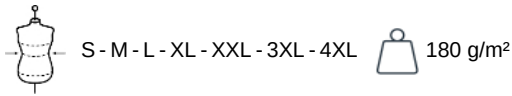
KARIBAN

K256

Men's long-sleeved piqué polo shirt

- Iconic chic, casual polo shirt.
- Straight fit.
- Made from 100% preshrunk cotton piqué.

100% preshrunk cotton piqué (Oxford Grey: 90% cotton/10% viscose). Comfort fit. 1x1 ribbed neck and cuffs. Placket with 3 matching buttons. Matyching taped neck. Certified STANDARD 100 by OEKO-TEX®N° CQ1007/7, IFTH.



More information

Logistic



Country of origin



BD - Bangladesh

Customs code



61051000

Washing instructions



Also available in version



K257

K269

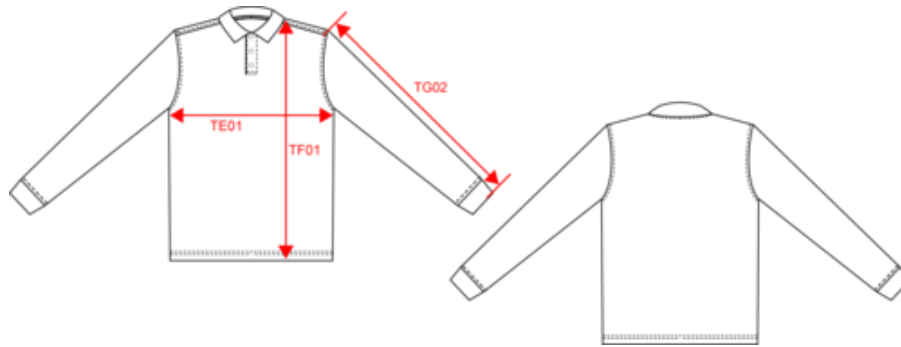


KARIBAN

K256

Men's long-sleeved piqué polo shirt

Dimensions (cm)





Measurements in cm	S	M	L	XL	XXL	3XL	4XL
TE01 - 1/2 chest width at 1.5cm below armhole	50.00	53.00	56.00	59.00	62.00	65.00	68.00
TF01 - Total height from HSP	70.00	72.00	74.00	76.00	78.00	80.00	82.00
TG02 - Long sleeve length	65.25	66.25	67.25	68.25	69.25	70.25	71.25

KARIBAN

K256

Men's long-sleeved piqué polo shirt

Colours information

 Black RVB : 35,35,37 Pantone C : Black Pantone TCX : 19-4004TCX	 Dark Grey RVB : 63,60,60 Pantone C : 447C Pantone TCX : 19-0000TCX	 Forest Green RVB : 41,62,48 Pantone C : 5605C Pantone TCX : 19-5918TCX	 Fuchsia RVB : 188,21,94 Pantone C : 7425C Pantone TCX : 18-1945TCX	 Kelly Green RVB : 0,105,74 Pantone C : 7727C Pantone TCX : 18-5338TCX
 Light Royal Blue RVB : 53,95,151 Pantone C : 653C Pantone TCX : 18-4041TCX	 Navy RVB : 41,46,56 Pantone C : 433C Pantone TCX : 19-4012TCX	 Orange RVB : 252,107,16 Pantone C : 1585C Pantone TCX : 16-1364TCX	 Oxford Grey RVB : Pantone C : Based on Cool gray 7C Pantone TCX : Based on 16-3850TCX	 Red RVB : 195,32,54 Pantone C : 200C Pantone TCX : 19-1664TCX
 Sky Blue RVB : 136,169,206 Pantone C : 5425C Pantone TCX : 14-4121TCX	 Tropical Blue RVB : 0,111,159 Pantone C : 7468C Pantone TCX : 18-4537TCX	 White RVB : 236,236,252 Pantone C : White Pantone TCX : 11-0601TCX	 Wine RVB : 91,39,54 Pantone C : 504C Pantone TCX : 19-1522TCX	 Yellow RVB : 254,186,36 Pantone C : 1235C Pantone TCX : 15-0955TCX

Logistic  10  40

Sizes	Width (cm)	Height (cm)	Length (cm)	Net weight (kg)	Gross weight (kg)	Pieces/Box	Pieces/Bundle
S	40.00	25.00	60.00	9.50000	10.80000	40	5
M	40.00	25.00	60.00	9.70000	11.00000	40	5
L	40.00	25.00	60.00	10.40000	11.70000	40	5
XL	40.00	28.00	60.00	11.00000	12.40000	40	5
XXL	40.00	28.00	60.00	11.30000	12.80000	40	5
3XL	40.00	32.00	60.00	12.30000	13.60000	40	5
4XL	40.00	32.00	60.00	13.30000	14.60000	40	5