

GILDAN



64000

Softstyle Adult T-Shirt

DETAILS

Weight
Content
Yarn Count
Features

153.0 G/SqM (White 144.0 G/SqM)
100% Ring Spun Cotton
30/1
Seamless twin-needle 1.9 cm collar
Taped neck and shoulders
Rolled forward shoulder
Twin-needle sleeve and bottom hems
Semi-fitted
High stitch density fabric
Tear away label

Country of Origin

Bangladesh, Haiti, Honduras, Mexico, Nicaragua,

Sizes

S-4XL

Case Packs

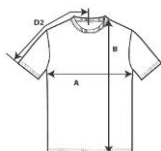
S - 2XL 72 PIECES
3XL 36 PIECES
4XL 12 PIECES

Colours

55

SKU's

305



SPECIFICATIONS

Centimeters

| | Tol- | Tol+ | S | M | L | XL | 2XL | 3XL | 4XL |
|---|-------|-------|--------|--------|--------|--------|--------|--------|--------|
| Chest (A) | 1.905 | 1.905 | 45.720 | 50.800 | 55.880 | 60.960 | 66.040 | 71.120 | 76.200 |
| Length from HPS (B) | 2.540 | 2.540 | 71.120 | 74.295 | 76.835 | 79.375 | 82.550 | 85.090 | 87.630 |
| Sleeve length (Centre back) (D2) | 1.905 | 1.905 | 40.005 | 43.180 | 46.355 | 49.530 | 52.705 | 55.880 | 58.420 |

Inches

| | Tol- | Tol+ | S | M | L | XL | 2XL | 3XL | 4XL |
|---|-------|-------|--------|--------|--------|--------|--------|--------|--------|
| Chest (A) | 0.750 | 0.750 | 18.000 | 20.000 | 22.000 | 24.000 | 26.000 | 28.000 | 30.000 |
| Length from HPS (B) | 1.000 | 1.000 | 28.000 | 29.250 | 30.250 | 31.250 | 32.500 | 33.500 | 34.500 |
| Sleeve length (Centre back) (D2) | 0.750 | 0.750 | 15.750 | 17.000 | 18.250 | 19.500 | 20.750 | 22.000 | 23.000 |

COLOURS

| Code | Sizes | Comments |
|------------------------|-----------|---------------------------|
| Antique Cherry Red | 246 S-2XL | 90% Cotton, 10% Polyester |
| Antique Heliconia | 247 S-2XL | 90% Cotton, 10% Polyester |
| Antique Sapphire | 254 S-2XL | 90% Cotton, 10% Polyester |
| Azalea | 071 S-2XL | |
| Berry | 268 S-2XL | |
| Blackberry | 278 S-2XL | 65% Polyester, 35% Cotton |
| Cardinal Red | 011 S-2XL | |
| Carolina Blue | 109 S-2XL | |
| Cherry Red | 194 S-2XL | |
| Chestnut | 084 S-2XL | |
| Cobalt | 445 S-2XL | |
| Coral Silk | 256 S-2XL | |
| Cornsilk | 475 S-2XL | |
| Dark Chocolate | 105 S-2XL | |
| Electric Green | 279 S-2XL | |
| Forest Green | 033 S-2XL | |
| Graphite Heather | 516 S-2XL | 50% Cotton, 50% Polyester |
| Heather Aubergine | 479 S-2XL | 65% Polyester, 35% Cotton |
| Heather Cardinal | 169 S-2XL | 65% Polyester, 35% Cotton |
| Heather Indigo | 173 S-2XL | 65% Polyester, 35% Cotton |
| Heather Irish Green | 215 S-2XL | 65% Polyester, 35% Cotton |
| Heather Military Green | 231 S-2XL | 65% Polyester, 35% Cotton |